



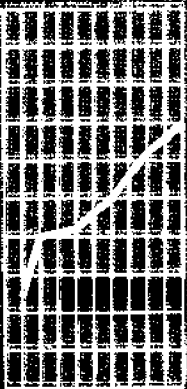
April 1996

EMBARGOED UNTIL 11:30 AM 22 APRIL 1996

Business Indicators

Australian Capital Territory

Business Indicators



NOTES

<i>FORTHCOMING ISSUES</i>	<i>ISSUE</i>	<i>RELEASE DATE</i>
	May 1996	20 May 1996
	June 1996	17 June 1996

<i>SYMBOLS AND OTHER USAGES</i>	
—	nil or rounded to zero
n.a.	not available
p	preliminary
n.p.	not available for publication

INQUIRIES For further information about statistics in this publication and the availability of related unpublished statistics, contact Leonie Peardon on Canberra (06) 207 0286 or any ABS State office.

For information about other ABS statistics and services, please contact Information Services on Canberra (06) 252 6627, or 252 6007 or any ABS State office.

Dalma Jacobs
Statistician Australian Capital Territory

SUMMARY OF FINDINGS

UPDATED SERIES

Series updated since the March 1996 issue are: population; labour force, job vacancies, industrial disputes; housing finance, building approvals; price indexes; retail turnover; tourism; new motor vehicle registrations; and business expectations. A feature article on travel to work and educational institutions by ACT residents in October 1995 is included on page 6.

NOTABLE MOVEMENTS

Unemployment The trend number of persons employed in the ACT has fallen for each of the last five months from a peak of 159,600 persons in October 1995 to 156,200 persons in March 1996 (an overall fall of 3,400 persons or -2.1%). Over the same period, the trend unemployment rate has steadily increased from 7.0% to 7.8% and the trend participation rate has decreased from 74.3% to 73.1%.

There were 1,600 job vacancies recorded in the ACT in February 1996; an increase of 14.3% from November 1995 and 23.1% from February 1995. Job vacancies in the private sector increased by 13.5% to 900 and in the public sector increased by 19.2% to 700.

Industrial disputes In the year to December 1995 there were only 9 working days lost per 1,000 employees in the ACT compared with 79 working days lost per 1,000 employees nationally.

Housing The trend number of dwelling units financed (includes refinancing) in the ACT during January 1996 increased by 1.4% to 900 dwellings. The trend estimate for the value of commitments in the ACT in January 1996 was \$88 million, an increase of 1.4% on the previous month.

The trend number of dwelling units approved in the ACT has fallen for each of the last 3 months from a peak of 244 dwellings in November 1995 to 197 dwellings in February 1996 (an overall fall of 19.3%). Over the same period there has been a fall of 1.5% nationally.

Quarterly established house price index for Canberra rose by 0.5% in December 1995 after a decline of 0.1% in September 1995. This was above the decrease of 0.2% for the weighted average of the six State capital cities. In the 12 months from December 1994, the price index decreased 1.5% for the ACT compared to a 0.3% increase for the cities' weighted average.

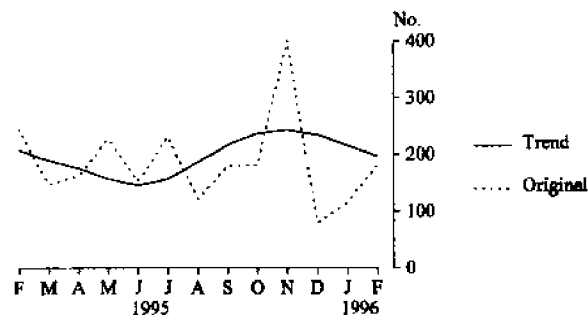
Retail turnover The trend estimate for retail turnover in the ACT for February 1996 was \$187.2 million, up slightly on the previous month's figure of \$185.8 million. Nationally trend retail turnover has increased by 8.2% over the last 12 months compared to 4.7% for the ACT.

New motor vehicle registrations The trend estimate for new motor vehicle registrations for the ACT in February 1996 was 1,100, an increase of 1.2% over January, and 6% higher than for February 1995. Nationally, the trend for total new registrations has shown consecutive rises since October 1995, with February 1996 recording a 1.6% increase.

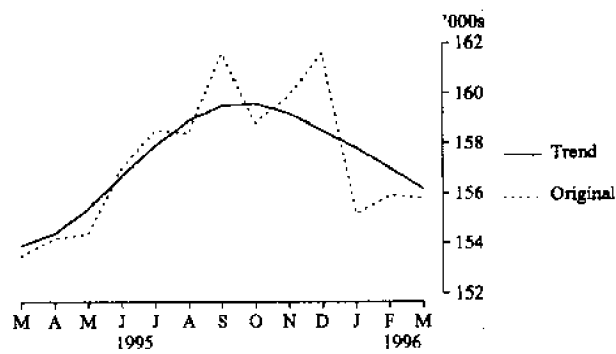
Tourism — room occupancy Room occupancy rate for hotels, motels and guest houses in the December quarter 1995 was 64.6%, up 1.9 points on the September quarter 1995 but down 1.6 points on the December quarter 1994. For 4 and 5 star hotels, motels and guest houses, the room occupancy rate fell to 70.8% in the December quarter 1995 compared with 75.8% in the December quarter 1994.

SELECTED BUSINESS INDICATORS

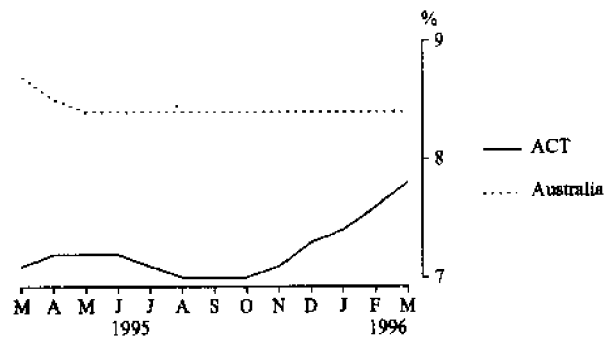
BUILDING APPROVALS —
NUMBER OF DWELLING
UNITS APPROVED



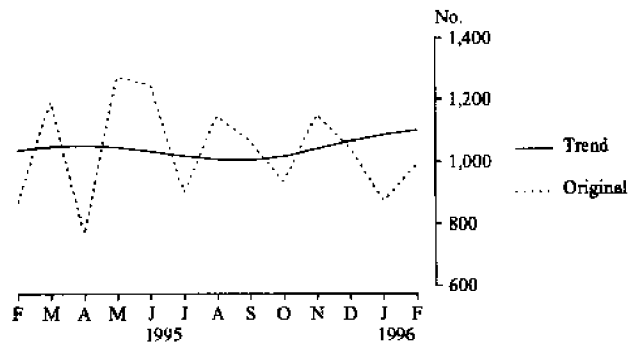
LABOUR FORCE —
EMPLOYMENT



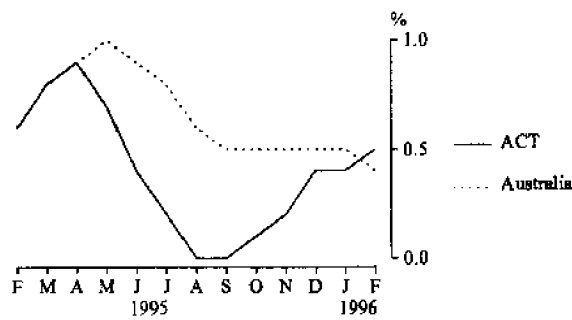
LABOUR FORCE — TREND
UNEMPLOYMENT RATE



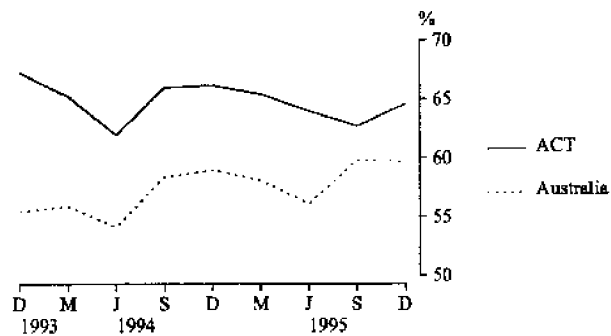
NEW MOTOR VEHICLE REGISTRATIONS



MONTHLY RETAIL
TURNOVER — TREND
PERCENTAGE CHANGE
FROM PREVIOUS MONTH



HOTELS, MOTELS AND
GUEST HOUSES — ROOM
OCCUPANCY RATE



TRAVEL TO WORK AND EDUCATIONAL INSTITUTIONS OCTOBER 1995

Summarised below are the main results on travel to work and study from the Survey of Travel to Work and Educational Institutions and Use of Library Services conducted in the ACT by the ABS on behalf of the Department of Urban Services during October 1995 as a supplement to the Monthly Population Survey.

A total of 136,501 persons within the ACT travelled to work during the survey period. Most people who travelled to work did so by car (76.0% of all travellers as drivers and 9.5% as passengers). The next most common modes were bus (7.0%) and walk (3.8%). Around 30% of employed persons indicated that their workplace was in the same district as their home. The most common destinations for employed persons were North Canberra (30.6%), South Canberra (26.0%), Belconnen (15.3%), Woden Valley (12.0%) and Tuggeranong (8.8%).

A total of 81,326 students in the ACT travelled to educational institutions. The most common mode of travel for students was car with the majority being passengers (31.7% of all students travel as passengers and 21.3% as drivers). The next most popular modes of travel to place of study were bus (21.6%), walking (17.3%) and cycling (7.4%). Just over 60% of students reported that their educational institution was located in the same district as their home. The most common destinations for students were Belconnen (33.5%), North Canberra (21.5%), Tuggeranong (19.6%), Woden Valley (10.3%) and South Canberra (9.7%).

Additional information on travel to work and educational institutions is available on request. Results on use of public library services were released in the March issue of *ACT Business Indicators*.

MAIN MODES OF TRAVEL TO WORK AND EDUCATIONAL INSTITUTIONS OCTOBER 1995

Modes of travel	Work		Study	
	Persons	%	Persons	%
Bus	9 490	7.0	17 585	21.6
Taxi	404	0.3	103	0.1
Car as driver	103 739	76.0	17 314	21.3
Car as passenger	12 941	9.5	25 746	31.7
Motor cycle/scooter	1 795	1.3	319	0.4
Bicycle	2 968	2.2	6 028	7.4
Walk	5 169	3.8	14 060	17.3
Other	—	—	171	0.2
Total	136 501	100.0	81 326	100.0

1

**AUSTRALIAN BUSINESS EXPECTATIONS: SALES, JUNE QUARTER
1996/MARCH QUARTER 1997, EXPECTED AGGREGATE CHANGE**

<i>Period</i>	<i>Australian Capital Territory</i>	<i>Australia</i>
	<i>%</i>	<i>%</i>
Short-term		
Dec. qtr 1994–Mar. qtr 1995	– 1.3	– 0.5
Mar. qtr 1995–June qtr 1995	5.2	1.4
June qtr 1995–Sept. qtr 1995	0.8	1.3
Sept. qtr 1995–Dec. qtr 1995	2.0	2.1
Dec. qtr 1995–Mar. qtr 1996	0.5	– 0.2
Mar. qtr 1996–June qtr 1996	1.8	2.3
Medium-term		
Dec. qtr 1994–Dec. qtr 1995	3.5	3.3
Mar. qtr 1995–Mar. qtr 1996	3.0	3.0
June qtr 1995–June qtr 1996	– 0.8	2.3
Sept. qtr 1995–Sept. qtr 1996	3.1	3.4
Dec. qtr 1995–Dec. qtr 1996	3.8	4.4
Mar. qtr 1996–Mar. qtr 1997	2.3	4.1

Indicator	Unit	Australian Capital Territory			Australia		
		Latest figure	Change from		Latest figure	Change from	
			Previous period	Same period previous year		Previous period	Same period previous year
		%	%		%	%	
POPULATION, VITAL AND LABOUR							
POPULATION, September qtr 95	'000s	304.9	0.3	1.1	18 114.4	0.3	1.3
Natural increase	no.	702	-16.5	-0.1	29 319	-14.3	5.4
Net migration	no.	83	-114.6	-170.9	31 092	60.8	32.2
Total increase	no.	785	186.5	34.0	60 411	12.9	17.7
LABOUR FORCE, March 96							
Original series							
Employed	'000s	155.8	-0.1	1.5	8 302.7	0.5	1.7
Unemployed	'000s	15.7	4.0	14.6	810.9	-5.3	-0.6
Unemployment rate ¹	%	9.1	0.3	0.9	8.9	-0.5	-0.2
Participation rate ¹	%	73.9	0.1	1.0	63.8	-0.2	—
Long-term unemployed (February 96)	no.	3 172	14.9	29.0	245 292	1.9	-16.7
Long-term unemployed as percentage total unemployed (February 96) ¹	%	21.0	2.1	3.6	28.6	-0.3	-4.6
Trend series							
Employed	'000s	156.2	-0.5	1.5	8 321.8	—	1.8
Unemployed	'000s	13.2	2.3	12.8	765.9	0.1	-1.1
Unemployment rate ¹	%	7.8	0.2	0.7	8.4	—	-0.3
Participation rate ¹	%	73.1	-0.2	0.9	63.6	-0.1	—
JOB VACANCIES, February 96	'000s	1.6	14.3	23.1	63.9	13.9	11.7
INDUSTRIAL DISPUTES IN PROGRESS, Dec. 95							
Working days lost	'000s	—	-100.0	—	10.2	-85.2	-80.5
Days lost per '000 employees (year ended August 95)	no.	9.0	12.5	12.5	79.0	-7.1	3.9
BUILDING AND CONSTRUCTION							
HOUSING FINANCE, January 96							
Secured commitments to individuals for Original series							
Construction of dwellings	\$m	5.7	1.8	18.7	407.4	-2.9	-7.1
Purchase of new dwellings	\$m	12.7	42.7	62.8	164.0	6.6	12.5
Purchase of established dwellings	\$m	31.9	-30.8	-19.8	2 574.7	-1.8	28.4
Total housing commitments	\$m	67.1	-9.7	17.5	3 146.2	-1.5	21.5
Seasonally adjusted series							
Total housing commitments	\$m	84.2	-0.7	8.8	3 915.7	13.2	16.7
Trend series							
Dwelling units financed	no.	900	1.4	11.8	38 354	0.2	6.1
Total housing commitments	\$m	88.0	1.4	13.5	3 735.0	0.9	9.6
BUILDING APPROVALS, February 96							
Original series							
Dwelling units	no.	179	54.3	-27.2	10 109	21.7	-17.3
Value of new residential	\$m	16.0	33.3	-38.9	952.1	19.6	-12.5
Value of residential alterations and additions	\$m	3.3	26.9	-45.9	177.6	6.1	-0.7
Value of non-residential	\$m	16.2	26.6	9.5	1 087.7	36.9	21.7
Value of total building	\$m	181.3	564.1	284.9	2 217.4	26.2	2.7
Trend series							
Dwelling units	no.	197	-8.8	-9.7	10 096	—	-23.5
BUILDING COMMENCEMENTS, September qtr 95							
New houses	no.	337	4.3	-33.7	23 574.0	-4.2	-30.2
Value of houses commenced	\$m	36.0	-4.0	-32.6	2 404.3	-3.4	-25.3
Value of non-residential building commenced	\$m	61.0	1.3	-40.4	2 488.4	-1.2	31.2
Value of total commencements	\$m	-136.7	9.2	-33.3	6 316.1	-5.5	-11.3
PRICE INDEXES							
Established house price index, Dec. qtr 95	(1989-90 =100.0)	128.6	0.5	-1.5	112.4	-0.2	0.3
PRICES, WAGES AND CONSUMER SPENDING							
CONSUMER PRICE INDEX, Dec. qtr 95	(1989-90 =100.0)						
Food		118.8	1.4	4.6	115.7	0.3	4.3
Housing		111.8	0.4	8.8	106.1	0.7	8.8
Transportation		127.1	0.2	6.9	122.3	0.2	4.7
All groups		120.0	0.8	5.4	118.5	0.8	5.1

For footnotes see end of table.

Indicator	Unit	Australian Capital Territory			Australia		
		Latest figure	Change from		Latest figure	Change from	
			Previous period	Same period previous year		Previous period	Same period previous year
		%	%		%	%	
PRICES, WAGES AND CONSUMER SPENDING — continued							
AVERAGE WEEKLY EARNINGS, November 95							
Original series							
Males	\$	858.90	3.5	7.7	662.70	1.2	3.1
Females	\$	689.50	2.9	7.8	430.00	0.1	1.2
Total persons	\$	623.40	1.5	7.0	554.30	1.2	2.3
Trend series							
Males	\$	751.20	2.3	6.7	662.50	0.7	3.2
Females	\$	519.70	0.5	3.6	432.50	0.2	1.5
Total persons	\$	635.50	1.6	5.9	554.50	0.6	2.3
RETAIL TURNOVER, February 96							
Original series							
Food retailing	\$m	74.5	1.5	10.2	3 956.4	-2.1	15.0
Department stores	\$m	17.8	-9.6	3.5	743.4	-11.5	8.9
Hospitality and services	\$m	25.9	0.4	-1.5	1 674.1	-7.6	12.0
All other retailing	\$m	49.3	-9.5	5.6	2 966.7	-7.8	11.1
Total	\$m	167.5	-3.4	6.1	9 340.6	-5.8	12.7
Trend series							
Food retailing	\$m	76.1	0.7	6.9	4 069.7	0.2	10.1
Department stores	\$m	23.9	0.4	1.7	983.9	0.9	5.6
Hospitality and services	\$m	28.9	1.4	-1.0	1 778.8	0.3	6.9
All other retailing	\$m	58.3		6.2	3 327.2	0.6	7.4
Total	\$m	187.2	0.5	4.7	10 159.6	0.4	8.2
TOURISM AND TRANSPORT							
HOTELS, MOTELS AND GUEST HOUSE ACCOMMODATION, September qtr 95							
Original series							
Room nights	'000s	3 210.5	0.6	-1.6	9 305.0	9.0	4.3
Takings at current prices	\$m	19.0	-1.0	1.1	851.6	12.6	12.1
Takings at 1989-90 prices	\$m	15.9	-3.0	-4.8	724.3	11.3	6.6
Room occupancy rate (December qtr 95) ¹	%	64.6	1.9	-1.6	59.7	-0.2	0.7
Seasonally adjusted series							
Room nights	'000s	208.2	-6.5	-0.6	9 011.1	1.1	4.2
Takings at current prices	\$m	19.3	-2.0	2.1	830.7	3.6	12.2
Takings at 1989-90 prices	\$m	16.2	-3.0	-3.6	706.4	2.3	6.7
Trend series							
Room nights	'000s	212.5	-3.2	2.2	9 005.3	0.6	4.1
Takings at current prices	\$m	19.6	—	7.1	828.5	2.7	12.2
Takings at 1989-90 prices	\$m	16.5	-0.6	2.5	701.9	1.1	6.0
NEW MOTOR VEHICLE REGISTRATIONS, Feb. 96							
Motor vehicles	no.	991	13.1	13.9	53 201	19.7	8.1
Seasonally adjusted motor vehicles	no.	1 093	1.5	12.4	55 454	4.1	3.8
Trend motor vehicles	no.	1 100	1.2	6.0	53 747	1.6	-0.1
AGGREGATE INDICATORS							
STATE ACCOUNTS, September qtr 95²							
Original series							
Gross State product at av. 1989-90 prices	\$m	2 013	-3.6	1.6	104 207	1.2	1.7
Gross State product at current prices	\$m	2 335	-3.8	1.6	116 382	1.4	4.9
State final demand at av. 1989-90 prices	\$m	2 832	-2.7	-2.7	103 691	-1.9	2.1
Private final consumption expenditure	\$m	1 383	3.1	4.9	73 816	3.3	6.3
Private gross fixed capital expenditure	\$m	191	—	-35.5	18 808	-3.8	-1.3
Trend series							
Gross State product at av. 1989-90 prices	\$m	2 051	0.4	1.3	105 068	0.5	2.3
Gross State product at current prices	\$m	2 385	0.5	2.0	118 224	1.8	6.1
State final demand at av. 1989-90 prices	\$m	2 827	-0.6	-3.1	104 254	0.1	2.6
Private final consumption expenditure	\$m	1 374	1.1	5.4	73 663	1.7	7.1
Private gross fixed capital expenditure	\$m	184	-9.4	-35.9	18 796	-1.3	-2.2

¹ Change shown in terms of percentage points.

² State estimates are not comparable to national estimates for June quarter 1995 due to revised aggregates in State Accounts (5242.0).

Source: ABS Catalogue Nos: 3101.0, 5242.0, 5609.0, 6202.0, 6203.0, 6302.0, 6321.0, 6354.0, 6401.0, 6408.0, 6416.0, 8501.0, 8634.0, 8635.8, 8731.0, 8752.0, 9214.0, 9301.0.

Indicator	Unit	Latest period	NSW	Vic.	Qld	SA	WA	Tas.	NT	ACT	Aust.
POPULATION	'000s	Sept. qtr 95	6 135.0	4 511.1	3 297.9	1 474.7	1 740.1	473.3	174.7	304.9	18 114.4
LABOUR FORCE											
Employed persons (trend)	'000s	Mar. 96	2 796.9	2 077.5	1 521.8	655.6	830.9	202.1	84.5	156.2	8 321.8
Unemployment rate (trend)	%	Mar. 96	7.8	8.6	9.1	9.4	7.9	10.4	6.7	7.8	8.4
STATE ACCOUNTS¹											
Gross State product at 1989-90 prices (trend)	\$m	Sept. qtr 95	35 763	27 714	17 427	7 559	11 767	2 089	1 193	2 051	105 068
Gross State product at current prices (trend)	\$m	Sept. qtr 95	40 587	30 843	19 372	8 701	12 499	2 464	1 265	2 385	118 224
BUILDING APPROVALS											
Dwelling units approved	no.	Feb. 96	3 361	1 931	2 405	486	1 482	197	68	179	10 109
Dwelling units approved (trend)	no.	Feb. 96	3 378	1 868	2 444	447	1 414	212	91	197	10 096
Value of non-residential building approved	\$m	Feb. 96	373.1	200.1	247.6	16.5	48.6	13.3	26.6	162.0	1 087.7
Value of all buildings approved	\$m	Feb. 96	774.0	448.9	487.4	64.5	191.6	33.9	35.8	181.3	2 217.4
ENGINEERING CONSTRUCTION											
Value of engineering construction work done	\$m	Sept. qtr 95	1 280.6	527.4	725.6	141.8	511.3	42.4	51.7	31.9	3 312.7
AVERAGE WEEKLY EARNINGS											
Full-time adult ordinary time (trend)	\$	Nov. qtr 95	694.00	652.10	616.80	613.70	671.90	614.40	664.90	767.90	661.40
RETAIL TRADE											
Retail turnover (trend)	\$m	Feb. 96	3 659.9	2 308.1	1 841.5	754.4	1 045.1	245.9	117.4	187.2	10 159.6
HOTELS, MOTELS & GUEST HOUSE ACCOMMODATION											
Room nights occupied (trend)	'000s	Sept. qtr 95	3 110.0	1 467.3	2 350.3	507.4	797.4	273.4	287.0	212.5	9 005.3
NEW MOTOR VEHICLE REGISTRATIONS											
Trend	no.	Feb. 96	18 538	12 945	10 441	3 712	5 239	1 110	662	1 100	53 747
			Syd.	Melb.	Bris.	Adel.	Perth	Hob.	Dar.	Canb.	Aust.
CONSUMER PRICE INDEX (1989-90=100.0)											
Food		Dec. qtr 95	116.4	114.0	115.8	118.2	115.8	117.1	116.4	118.8	115.7
Housing		Dec. qtr 95	108.4	102.8	112.1	103.8	100.8	106.5	118.9	111.8	106.1
Transportation		Dec. qtr 95	121.9	122.5	120.1	124.3	123.1	120.1	118.2	127.1	122.3
All Groups		Dec. qtr 95	118.3	118.5	118.6	121.1	116.3	119.2	119.2	120.0	118.5
Average retail prices (cents)											
Milk, carton, supermarket sales	1 litre	Dec. qtr 95	110.0	117.0	112.0	114.0	116.0	120.0	109.0	106.0	n.a.
Bread, white loaf, sliced, supermarket sales	680 g	Dec. qtr 95	186.0	164.0	180.0	148.0	166.0	154.0	189.0	179.0	n.a.
Beef, rump steak	1 kg	Dec. qtr 95	1 311.0	1 119.0	1 135.0	1 130.0	1 101.0	1 114.0	1 187.0	1 151.0	n.a.
Chicken, frozen	1 kg	Dec. qtr 95	280.0	325.0	267.0	331.0	329.0	323.0	358.0	303.0	n.a.
Potatoes	1 kg	Dec. qtr 95	133.0	177.0	151.0	134.0	120.0	93.0	152.0	136.0	n.a.
Coffee, instant	150 g jar	Dec. qtr 95	591.0	590.0	600.0	552.0	577.0	644.0	572.0	582.0	n.a.
Scotch nip, public bar	30 ml	Dec. qtr 95	313.0	266.0	246.0	317.0	374.0	215.0	306.0	288.0	n.a.
Private motoring — petrol, leaded	1 litre	Dec. qtr 95	71.9	73.0	64.1	74.0	75.7	78.5	77.1	76.1	n.a.
Private motoring — petrol, unleaded	1 litre	Dec. qtr 95	69.9	71.0	62.1	71.7	73.7	76.5	75.1	74.1	n.a.

¹ State estimates are not comparable to national estimates for June quarter 1995 due to revised aggregates in State Accounts (5242.0).

4

ACT IN RELATION TO THE REST OF AUSTRALIA — PERCENTAGE CHANGES

Indicator	Latest period	NSW	Vic.	Qld	SA	WA	Tas.	NT	ACT	Aust.
POPULATION	Sept. qtr 95	0.3	0.2	0.6	—	0.5	0.1	0.5	0.3	0.3
LABOUR FORCE										
Employed persons (trend)	Mar. 96	-0.1	0.1	0.1	—	0.1	—	0.6	-0.5	—
Unemployment rate (trend) ¹	Mar. 96	—	-0.1	-0.1	—	0.1	0.2	0.1	0.2	—
STATE ACCOUNTS²										
Gross State product at 1989-90 prices (trend)	Sept. qtr 95	0.6	0.6	1.1	1.7	1.0	-0.4	0.6	0.4	0.5
Gross State product at current prices (trend)	Sept. qtr 95	2.0	1.3	2.2	1.6	1.8	1.0	1.5	0.5	1.8
BUILDING APPROVALS										
Dwelling units approved	Feb. 96	16.1	27.1	28.8	36.9	19.4	-13.6	-17.1	54.3	21.7
Dwelling units approved (trend)	Feb. 96	1.2	-1.4	0.2	-4.3	2.5	-0.9	-4.6	-8.5	—
Value of non-residential building approved	Feb. 96	32.4	22.4	160.4	74.4	-55.1	-68.6	1.5	165.6	36.9
Value of all buildings approved	Feb. 96	18.7	29.7	68.4	-36.8	-18.9	-51.0	1.1	564.1	26.2
ENGINEERING CONSTRUCTION										
Value of engineering construction work done	Sept. qtr 95	-8.9	-23.7	-6.3	-29.9	7.0	-35.7	-26.6	-17.6	-11.1
AVERAGE WEEKLY EARNINGS										
Full-time adult ordinary time (trend)	Nov. qtr 95	1.4	0.8	0.9	-0.2	1.9	0.9	0.4	2.3	1.1
RETAIL TRADE										
Retail turnover (trend)	Feb. 96	0.6	0.5	0.4	-0.7	0.3	0.7	-0.3	0.5	0.4
HOTELS, MOTELS & GUEST HOUSE ACCOMMODATION										
Room nights occupied (trend)	Sept. qtr 95	2.0	1.0	-0.9	2.1	-1.8	3.0	0.2	-3.2	0.6
NEW MOTOR VEHICLE REGISTRATIONS										
Trend	Feb. 96	1.5	0.8	3.8	1.1	0.4	0.6	-0.6	1.2	1.6
		Syd.	Melb.	Bris.	Adel.	Perth	Hob.	Dar.	Canb.	Aust.
CONSUMER PRICE INDEX (1989-90=100.0)										
Food	Dec. qtr 95	0.3	0.4	0.3	0.3	-0.7	-0.2	1.0	1.4	0.3
Housing	Dec. qtr 95	0.9	0.4	0.6	1.1	0.8	0.5	2.1	0.4	0.7
Transportation	Dec. qtr 95	0.7	0.1	—	-0.1	-0.2	0.6	-0.7	0.2	0.2
All Groups	Dec. qtr 95	0.9	0.8	0.6	0.8	0.6	0.7	1.0	0.8	0.8
Average retail prices (cents)										
Milk, carton, supermarket sales	Dec. qtr 95	0.9	0.9	0.9	—	—	—	2.8	—	n.a.
Bread, white loaf, sliced, supermarket sales	Dec. qtr 95	0.5	1.9	4.0	—	5.1	-1.3	2.2	-2.7	n.a.
Beef, rump steak	Dec. qtr 95	0.9	-2.7	-0.9	-4.0	-4.6	-4.2	-3.1	0.5	n.a.
Chicken, frozen	Dec. qtr 95	4.5	11.3	-9.2	0.3	5.4	-10.5	—	19.3	n.a.
Potatoes	Dec. qtr 95	14.7	33.1	24.8	26.4	-2.4	36.8	23.6	14.3	n.a.
Coffee, instant	Dec. qtr 95	1.9	3.7	7.0	-2.0	0.7	0.8	7.1	3.6	n.a.
Scotch nip, public bar	Dec. qtr 95	1.3	3.1	0.4	0.6	2.5	1.4	2.7	2.9	n.a.
Private motoring — petrol, leaded	Dec. qtr 95	-0.7	-1.2	-2.3	-1.7	-1.7	1.3	-1.7	0.4	n.a.
Private motoring — petrol, unleaded	Dec. qtr 95	-0.7	-1.3	-2.4	-1.9	-1.6	1.3	-1.7	0.4	n.a.

¹ Change shown in terms of percentage points.

² State estimates are not comparable to national estimates for June quarter 1995 due to revised aggregates in State Accounts (5242.0).

For more information . . .

The ABS publishes a wide range of statistics and other information on Australia's economic and social conditions. Details of what is available in various publications and other products can be found in the ABS Catalogue of Publications and Products available from all ABS Offices.

ABS Products and Services

Many standard products are available from ABS bookshops located in each State and Territory. In addition to these products, information tailored to the needs of clients can be obtained on a wide range of media by contacting your nearest ABS Office. The ABS also provides a Subscription Service for standard products and some tailored information services.

National Dial-a-Statistic Line

0055 86 400

Steadycom P/L: premium rate 25c/21.4 secs.

This number gives 24-hour access, 365 days a year, for a range of important economic statistics including the CPI.

Internet

<http://www.statistics.gov.au>

A wide range of ABS information is available via the Internet, with basic statistics available for each State, Territory and Australia. We also have Key National Indicators, ABS product release details and other information of general interest.

Sales and Inquiries

Keylink STAT.INFO/ABS
X.400 (C:Australia,PUB:Telememo,O:ABS,FN:STAT,SN:INFO)
Internet stat.info@abs.telememo.au

National Mail Order Service (06) 252 5249
Subscription Service 1800 02 0608

	Information Inquiries	Bookshop Sales
SYDNEY	(02) 268 4611	268 4620
MELBOURNE	(03) 9615 7755	9615 7755
BRISBANE	(07) 3222 6351	3222 6350
PERTH	(09) 360 5140	360 5307
ADELAIDE	(08) 237 7100	237 7582
HOBART	(002) 205 800	205 800
CANBERRA	(06) 252 6627	207 0326
DARWIN	(089) 432 111	432 111



Client Services, ABS, PO Box 10, Belconnen ACT 2616

